

The Closet distribution will include some of the following items according to availability:

- School Supplies
- Clothing for Young Adults/  
Children/Women/Men
  - Shoes
  - Jackets
  - Hats
  - Blouses/Shirts
- Personal Care Products
- Hair Care Products
- Household Items'
- Books



COPWA/GUIDING LIGHT  
College Station  
PO Box 561  
New York, NY 10030  
Tel. No.: (347) 326-8080  
Fax No.: (347) 326-8081  
Lbridignthegap@COPWA.org  
www.COPWA.org



## CLOSET STAFF & VOLUNTEERS

Linda L. Fleming

Rev. Dr. Carl L. Washington, Jr.

Tony L. Mullen

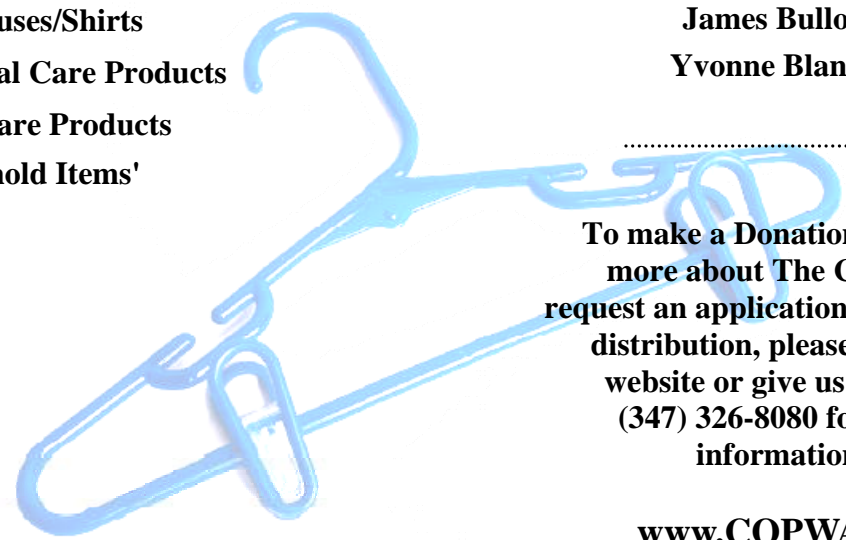
Janette Walker

Alice Holloway

Claudette Jefferson

James Bullock

Yvonne Blanche



.....  
To make a Donation, to learn more about The Closet or request an application for our next distribution, please visit our website or give us a call at (347) 326-8080 for more information.

[www.COPWA.org](http://www.COPWA.org)

## GUIDING LIGHT

### NEW BEGINNINGS/ THE CLOSET



*Filling a critical gap for  
individuals and families  
on the brink.*

College Station, PO Box 561  
New York, NY 10030

Tel. No.: (347) 326-8080

Fax No.: (347) 326-8081

Lbridignthegap@COPWA.org

[www.COPWA.org](http://www.COPWA.org)

# GUIDING LIGHT'S NEW BEGINNINGS/THE CLOSET

## THE MISSION

The Mission of **NEW BEGINNINGS/THE CLOSET (NBTC)** is to fill a critical gap by helping to meet basic needs with a special focus on individuals/families in-crisis. **New Beginnings/The Closet** will aide in the fight against poverty and the economic recessions' impact, by providing needed articles of clothing, food and necessities, which will enable health, employment and self esteem to those most in need.

.....

**The Closet is available by INVITATION LETTER only! APPLY TODAY by filling out an application and returning to us as soon as possible to be a part of GUIDING LIGHTS PROGRAM NEW BEGINNINGS/THE CLOSET.**

**Offering A Ray of Hope in the midst of trying times.....**



## THE NEED



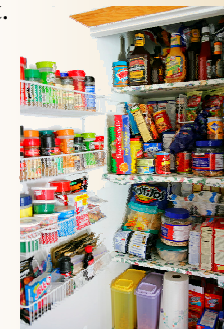
The recent economic crisis has disproportionately impacted already underserved communities throughout New York City, and the impact on the predominantly African American residents of Central Harlem has been devastating. In "normal" times, unemployment rates for these communities are typically double the City's average. Today, the disparity is even greater. In some parts of Harlem the unemployment rate is close to 20%. Many non-profit and community based services that individuals rely upon are overburdened and facing slashed budgets.

This bleak economic outlook surely calls for a long-term response; however, there is a pressing need for immediate material assistance. According to a recent report, there are over 10,000 homeless families in Harlem alone. Without a bed to sleep in or clothes to wear to school or to an job interview, education and job training programs cannot achieve their full impact, thus continuing the vicious cycle of underachievement where there is plenty of potential. At a time of crisis, NBTC fills a critical gap for individuals and families on the brink.

## THE CLOSET



**C O P W A / Guiding Light** program has a long history of providing community distributions, through organizations who donate food, personal care items, clothing and Christmas toys for our Annual Angel Tree event. In total, Guiding Light in collaboration with New Mount Zion Baptist Church has reached over 3,500 individuals/families throughout the Central Harlem and South Bronx communities with these services. **New Beginnings/The Closet** is a new initiative that will solely focus on community giving for those in need and in a struggle to make ends meet.



**For Information to request an application visit us at our website**

**[www.COPWA.org](http://www.COPWA.org)**